



Nature of the product: ORGANIC ESSENTIAL OIL
Botanical Name: *Rosmarinus officinalis L.*
Commercial Name: ORGANIC ROSEMARY CT 1.8 CINEOL
Batch Number: 2200148
Origin: MOROCCO
Production date: SEPTEMBER 2021

PHYSICAL CHARACTERISTICS

	ORGANIC EO OF ROSEMARY CT 1.8 CINEOL FROM MOROCCO BATCH 2200148
Relative Density at 20 °C	0.9100
Refractive Index at 20°C	1.4690
Optical Rotation at 20°C	+3.67°

GAS CHROMATOGRAPHY (standard NF ISO 11024)

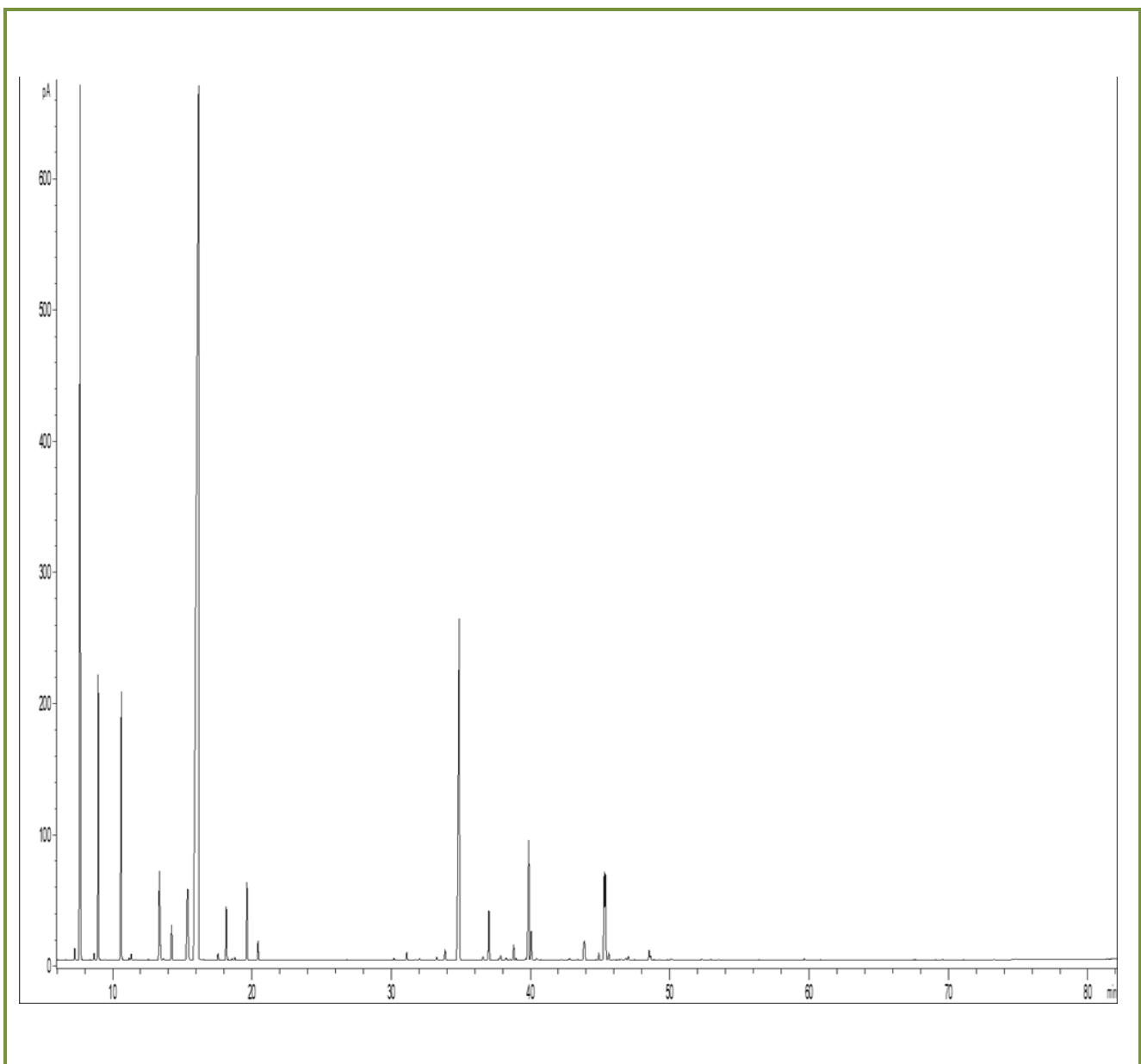
Conditions of Chromatography analysis :

- GC/SM 6890/5973 AGILENT : Column : VF WAX polaire : 60 m × 0,25 mm × 0,25 µm
- GC/FID 6890 AGILENT : Column : VF WAX polaire : 60 m × 0,25 mm × 0,25 µm
- Temperature programmation : (2S) 10 min at 60°C – 2°C/min → 250°C – 15 min at 250°C
- Carrier Gas : He 30 psi/FID ; 23 psi/MS
- Mass Range : 30 to 350
- Sample dilution : 10 % in Hexane
- Injected volume : 1 µL

The compounds are identified by a combined search of retention time (our own library) and mass spectra (NKS library, 75 000 spectra),

% are calculated from the peak areas given by GC/FID, without the use of correction factor,

Chromatographic Profile (GC/FID) – BATCH # 2200148



**Table of results 1 – ORGANIC EO ROSEMARY CT 1.8 CINEOL
FROM MOROCCO BATCH # 2200148**

Pics	TR(min)	Components	%
1	6.61	BORNYLENE	0.01
2	7.25	TRICYCLENE	0.16
3	7.66	alpha-PINENE	13.82
4	7.70	alpha-THUYENE	0.16
5	8.66	alpha-FENCHENE	0.10
6	8.97	CAMPHENE	4.36
7	10.62	beta-PINENE	4.84
8	11.19	SABINENE	0.04
9	11.33	PINADIENE	0.10
10	11.67	THUYA-2,4-DIENE	0.01
11	12.57	delta3-CARENE	0.02
12	13.37	beta-MYRCENE	1.71
13	13.43	alpha-PHELLANDRENE	0.17
14	13.64	psi-LIMONENE	0.03
15	14.24	alpha-TERPINENE	0.70
16	15.38	LIMONENE	2.50
17	16.17	1,8-CINEOLE	46.22
18	16.34	2-HEXENAL	0.01
19	16.51	FURAN, 2-PENTYL-	0.02
20	17.57	cis-beta-OCIMENE	0.11
21	18.16	gamma-TERPINENE	0.95
22	18.60	trans-beta-OCIMENE	0.03
23	18.77	3-OCTANONE	0.05
24	19.65	p-CYMENE	1.43
25	20.45	TERPINOLENE	0.34
26	26.82	3-HEXEN-1-OL	0.01
27	30.20	alpha,p-DIMETHYLSTYRENE	0.05
28		ISOCHRYSANTHENONE	
29	31.13	1-OCTEN-3-OL	0.15
30	31.76	alpha-CUBEBENE	0.02
31	32.03	trans-THUYANOL	0.04
32	32.32	LINALOOL trans-OXIDE	0.01
33	33.27	YLANGENE	0.07
34	33.54	SESQUITERPENE	0.02
35	33.87	alpha-COPAENE	0.24
36	34.35	SESQUITERPENE	0.01
37	34.89	CAMPHOR	10.37
38	35.77	beta-BOURBONENE	0.01
39	36.59	cis-THUYANOL	0.09
40	37.02	LINALOOL	0.92
41	37.76	NEOISOPULEGOL	0.04
42	37.87	PINOCARVONE	0.11
43	38.24	ISOPULEGOL	0.06
44	38.39	BORNYL FORMATE	0.02
45	38.55	SESQUITERPENE	0.03

**Table of results 2 – ORGANIC EO ROSEMARY CT 1.8 CINEOL
FROM MOROCCO BATCH # 2200148**

Pics	TR(min)	Components	%
46	38.80	BORNYL ACETATE	0.32
47	38.96	FENCHOL	0.05
48	39.66	CAMPHENE HYDRATE	0.05
49	39.87	beta-CARYOPHYLLENE	2.92
50	40.05	TERPINENE-4-OL	0.61
51	40.44	AROMADENDRENE	0.05
52	40.53	SESQUITERPENE	0.01
53	40.75	SESQUITERPENE	0.02
54	41.33	COPACAMPHENE	0.01
55	42.23	MYRTENAL	0.03
56	42.71	beta-GURJUNENE	0.01
57	42.81	trans-PINOCARVEOL	0.05
58	43.37	ZONARENE	0.03
59	43.88	FARNESENE ISOMER	0.03
60	43.89	delta-TERPINEOL	0.36
61	43.90	alpha-HUMULENE	0.32
62	44.17	trans-VERBENOL	0.02
63	44.68	LAVANDULAL	0.02
64	44.91	gamma-MUUROLENE	0.16
65	45.30	alpha-TERPINEOL	1.90
66	45.39	BORNEOL	1.77
67	45.63	VERBENONE	0.19
68	45.98	beta-HIMACHALENE	0.02
69	46.17	SESQUITERPENE	0.01
70	46.36	GERMACRENE D	0.02
71	46.52	SESQUITERPENE	0.03
72	46.87	alpha-MUUROLENE	0.08
73	47.03	beta-BISABOLENE	0.08
74	47.46	SELINENE ISOMER	0.02
75	48.53	delta-CADINENE	0.21
76	48.62	gamma-CADINENE	0.09
77	48.80	beta-SESQUIPHELLANDRENE	0.02
78	48.90	alpha-CURCUMENE	0.01
79	49.26	MENTHADIENOL ISOMER	0.02
80	49.40	KETON COMPOUND	0.01
81	49.85	CADINA-1,4-DIENE	0.02
82	50.10	MYRTENOL	0.04
83	50.21	CAMPHOLENOL	0.02
84	50.36	alpha-AMORPHENE	0.01
85	52.28	cis-CALAMENENE	0.02
86	52.36	trans-CALAMENENE	0.02
87	52.94	p-CYMENE-8-OL	0.03
88	53.52	E-GERANYL ACETONE	0.02
89	56.40	alpha-CALACORENE	0.02
90	59.68	CARYOPHYLLENE OXIDE	0.05

**Table of results 3 – ORGANIC EO ROSEMARY CT 1.8 CINEOL
FROM MOROCCO BATCH # 2200148**

Pics	TR(min)	Components	%
91	60.82	METHYLEUGENOL	0.01
92	67.52	EUGENOL	0.01
93	67.64	THYMOL	0.01
94	69.57	CARVACROL	0.01
95	74.85	SESQUITERPENIC EPOXIDE	0.02
		TOTAL	99.99